

OPHTHALMIC Product Guide

A JOBSON PUBLICATION • VOLUME 150 / NUMBER 2

Dear Doctor:

Review of Optometry is pleased to offer you this preview of many exciting new products now available in the ophthalmic marketplace. In the pages to follow, you'll learn about innovative new medications, diagnostic instruments, corrective lens options, in-office laboratory equipment and many other new products. To obtain more information on a particular product, follow these steps:

1. Circle the corresponding number on the enclosed reader service card for each product of interest to you.
2. Fill in your name and address.
3. Return the postage-paid card to us. Educational materials will be sent directly to you by the individual companies.

Thank you for your interest and support!

NOW in a Preservative-Free Formula

Scientifically advanced.
A brilliantly simple choice.

low blue
lipid
enhanced
comfortable




Circle No. 01

© 2012 Allergan, Inc. ® and ™ marks owned by Allergan, Inc. APC41YS12

Allergan, Inc. (800) 433-8871
www.refreshbrand.com

Also available in multi-dose

Keeler Slit Lamp Technology In Your Hands

- | | |
|--------------------|-----------------|
| PSL Classic | PSL 1 |
| • Keeler Optics | • Keeler Optics |
| • 10x & 16x Mag | • 10x Mag |
| • Docking | • Direct Inline |
| • Station & Direct | • Charging |
| • Inline Charging | |

All of the other great features, including iPhone 4 Technology, Controllable illumination from maximum to zero lumens, charge and use the battery simultaneously (always have power); and the most apertures/filters along with 1.mm square patch for assessing a/c flare.



Buy Online!
keelerusa.com



Keeler

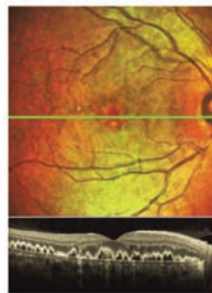
Circle No. 02

Keeler Instruments, Inc. ▲ (800) 523-5620
www.keelerusa.com

SPECTRALIS® OCT with MultiColor™

MultiColor imaging is now available on all new SPECTRALIS models providing additional diagnostic power by highlighting structural detail from different depths within the retina. MultiColor imaging expands the power of SPECTRALIS for retina, glaucoma and anterior segment applications.

- Multi-modality imaging
- TruTrack™ active eye tracking
- AutoRescan™ automatic follow-up scan placement
- 1-micron reproducibility
- Upgradable hardware platform
- Comprehensive DICOM compatibility



HEIDELBERG ENGINEERING

Heidelberg Engineering ▲ (800) 931-2230
www.HeidelbergEngineering.com

Circle No. 03

FORUM Eye Care Data Management



- Centralizes your data for easy access whenever and wherever you are
- Integrates the data from ZEISS and non-ZEISS diagnostic devices
- Connects with most ophthalmic EMR/EHR systems

Circle No. 04



Carl Zeiss Meditec, Inc. | Toll free: 800 342 9821 | www.meditec.zeiss.com/pg-forum

We make it visible.

Be sure to check out our Web site, too! On www.revoptom.com, click the **Product Guide** button.

TOPCON KR-1 AUTO KERATO-REFRACTOMETER

The new KR-1 Auto Kerato-Refractometer from Topcon features fully automated operation with an easy-to-use color touch screen, a 360 degree rotatable monitor, a flexible layout and space saving design. The patented Topcon Rotary Prism measuring system ensures fast, accurate and repeatable refraction and keratometry measurements.



TOPCON
CONNECTING VISIONS

Topcon Medical Systems ▲ (800) 223-1130
www.topconmedical.com

Circle No. 05

TOPCON SL-D7 WITH OPTIONAL IMAGENET®

The digital-ready SL-D7 Slit Lamp from Topcon can be combined with the optionally available IMAGENet® acquisition system* to allow the user to perform digital documentation of the anterior segment. Featuring the built-in DC-3 digital camera, the system provides clear and sharp images to suit the needs of the demanding eye care professional. Flash illumination is controlled by a low-profile compact power supply with 10 intensity levels, providing precise control. The seamless interface to IMAGENet® provides various image management capabilities.



TOPCON
CONNECTING VISIONS

*Sold separately or as part of a package.

Topcon Medical Systems ▲ (800) 223-1130
www.topconmedical.com

Circle No. 06

TOPCON TRC-NW8F WITH OPTIONAL IMAGENET®

The TRC-NW8F Imaging System consisting of the Topcon TRC-NW8F automated non-myd/mydriatic retinal camera and the optionally available IMAGENet acquisition system* provides an easy to use solution for obtaining color, red-free, and fluorescein photography of the retina. The digital camera provides 16.2 megapixels of resolution and the TRC-NW8F features 9 internal fixation targets for image consistency when composing wide-field views. The seamless interface to the optional IMAGENet® acquisition system* provides the user with a variety of image management tools and patient education utilities.



TOPCON
CONNECTING VISIONS

*Sold separately or as part of a package.

Topcon Medical Systems ▲ (800) 223-1130
www.topconmedical.com

Circle No. 07

TOPCON CV-5000S VISION TESTER

The CV-5000S Automated Vision Tester sets new quality standards. The fast lens rotation provides comfort for both user and patient while the compact and contemporary design enhances the doctor's professional image. The CV-5000S provides a complete 21-point refraction and features the KB-50S One Dial Controller with a 10.4" color touch-screen display. Complete connectivity allows data to be sent automatically to every CV system throughout the office and populated automatically into the EMR, making paperless refraction a reality.



TOPCON
CONNECTING VISIONS

Topcon Medical Systems ▲ (800) 223-1130
www.topconmedical.com

Circle No. 08

TOPCON KR-1W WAVEFRONT ANALYZER

The 5-in-1 KR-1W Wavefront Analyzer boasts the combined technologies of wavefront aberration, corneal topography, auto refraction, keratometry and pupillometry. The system features full auto-alignment, a large color touch screen, onboard evaluation software, wavefront image sequence and simulated visual acuity assessment. The KR-1W provides the eye care professional with all the required information on the human refractive system to perform optimal wavefront analysis.



TOPCON
CONNECTING VISIONS

Topcon Medical Systems ▲ (800) 223-1130
www.topconmedical.com

Circle No. 09

TOPCON 3D OCT-2000 SPECTRAL DOMAIN OCT

The Topcon 3D OCT-2000 system is the first Spectral Domain OCT system to incorporate a high resolution fundus camera and a user-friendly color touch screen display in a compact, space saving design. The easy-to-use, intuitive FastMap™ software enables dynamic viewing of the OCT data, providing 3D, 2D and fundus images simultaneously. Pin-Point Registration™ properly indicates the location of the OCT image within the fundus image. In addition, the compare function allows users to view serial exams in a comparison view and apply different analytical tools. The seamless integration of the 3D OCT-2000 with Topcon's Synergy™ Ophthalmic Data Management System provides true connectivity and access to images anywhere, anytime.



TOPCON
CONNECTING VISIONS

Topcon Medical Systems ▲ (800) 223-1130
www.topconmedical.com

Circle No. 10

FUNCTIONAL VISION ANALYZER™

Contrast Sensitivity Testing with Two Glare Levels

The FVA offers a number of exams to evaluate functional vision and quality of vision. Background illumination levels inside the unit are constantly monitored and controlled.

Exams include:

- Visual Acuity – monocular and binocular at near, distance, and mid-range (optional)
- Contrast Sensitivity testing with F.A.C.T.® (Daytime/Nighttime; with glare/without glare)
- Stereopsis – Stereo Depth Perception testing
- Color Perception testing
- Potential Acuity (pin hole) The NEW upgraded EyeView® software utilizes a digital image processor to produce a pictorial model of the patients' functional vision.



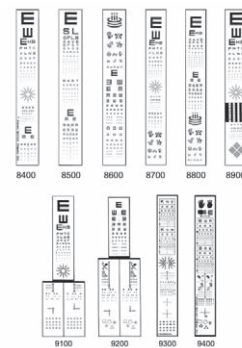
STEREO OPTICAL

Stereo Optical ▲ (800) 344-9500
www.StereoOptical.com

Circle No. 11

PROJECTOR AND VECTOGRAPHIC SLIDES

Stereo Optical's projector slides are made of high-quality photo-graphic film, sealed between two pieces of glass to ensure sharp opto-types and maintain the integrity of the tests. Each slide can be adjusted for use in any testing lane. Available in Standard or Vectographic models, for children through adults.



STEREO OPTICAL

Stereo Optical ▲ (800) 344-9500
www.StereoOptical.com

Circle No. 12

DISTANCE RANDOT® STEREO TEST

A test for distance stereopsis for patients as young as 4 years of age.

Test includes:

- 4 tests in 1 booklet (400 sec of arc to 60 sec of arc)
- 1 pair of Standard 3-D Viewers and 1 pair of Pediatric 3-D Viewers
- Affordable
- Portable and readily available



STEREO OPTICAL

"Distance stereoacuity measured using Distance Randot® showed overall improvement following surgery for intermittent exotropia."

Eileen E. Birch, Ph.D.
Senior Research Scientist,
Retina Foundation of the Southwest

Stereo Optical ▲ (800) 344-9500
www.StereoOptical.com

Circle No. 13

TELLER ACUITY CARDS® II

Features Include:

- Glare-free laminated test cards for increased durability
- Digitally printed test cards
- No edge artifacts

Proven Features still include:

- Meets AOA guideline for infant vision testing

Testing Formats Available:

- TAC II Full set: 16 cards (from 20/3200 to 20/30)
- TAC II Half set: 8 cards (from 20/3200 to 20/30)



STEREO OPTICAL

Stereo Optical ▲ (800) 344-9500
www.StereoOptical.com

Circle No. 14

STEREOTESTS

Gold Standard Features Include:

- Durable leatherette testing booklet
- Polarized 3-D cleanable lenses
- Sturdy hard plastic viewer frames

Testing Formats Available:

- Stereo Fly
- Randot®
- Stereo Butterfly
- Random Dot E
- Randot® Preschool



STEREO OPTICAL

Stereo Optical ▲ (800) 344-9500
www.StereoOptical.com

Circle No. 15

VECTOGRAMS

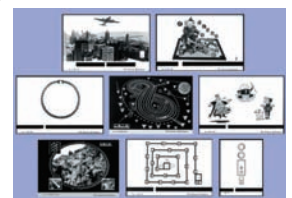
Stereo Optical has set the standard for vision training. Available in fixed or variable styles to accommodate unlimited base-in/base-out training. Each Vectogram includes one pair of 3-D viewers. Choose from:

Variable:

- Quoits
- Spirangle
- Clown
- Chicago Skyline
- Mother Goose
- Stereotest
- Basic Fusion

Fixed:

- Acuity Suppression
- Figure Eight
- Compass Points

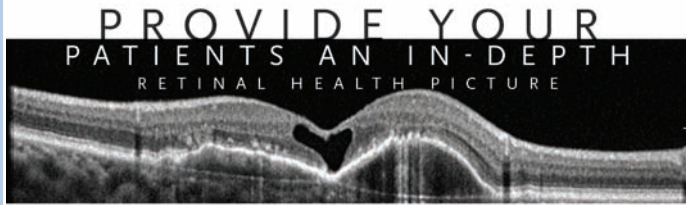


STEREO OPTICAL

Stereo Optical ▲ (800) 344-9500
www.StereoOptical.com

Circle No. 16

For information about the products above, contact Stereo Optical:
Telephone (800) 344-9500, Fax (773) 867-0388, e-mail: SALES@StereoOptical.com, internet: www.StereoOptical.com



The **OptosOCT SLO** combines industry-leading spectral OCT imaging with a confocal scanning laser ophthalmoscope (SLO) in one highly advanced instrument.

Clinicians can diagnose and track changes over time in Glaucoma and in the most complex retinal diseases and their treatments.

OptosOCT SLO
Retina Glaucoma Cornea Analysis

Tel: (800) 854-3039 email: BDS@optos.com

Building *The Retina Company*  optos.com

Circle No. 17

SIGHTPATH MEDICAL—MOBILE CATARACT AND REFRACTIVE EQUIPMENT AND SERVICES

Sightpath Medical is the leading U.S. provider of on-demand equipment and services for cataract and refractive surgery. More than 200 Sightpath employees serve hundreds of surgeons and facilities in both rural and urban communities across the country. We have earned their trust through the quality of our equipment, the skill of our technicians, and the dedication and responsiveness of our staff.

It is our goal to make advanced ophthalmic surgical services an economic possibility wherever and whenever they are needed. Sightpath mobile and fixed-location solutions enable ophthalmologists and healthcare facilities to provide better, more convenient care to their patients. To learn more about our mobile refractive, cataract, or laser-assisted cataract services, visit our website www.sightpathmedical.com/RO.



Sightpath Medical ▲ (888) 975-5524
www.sightpathmedical.com/RO

Circle No. 18

THE EPIC AUTOMATED REFRACTION SYSTEM

The EPIC is our most innovative space and time saving combined product line to streamline operations, grow your business and increase patient satisfaction. Marco has successfully installed thousands of automated refraction systems. Each receives the Marco certified implementation process that guarantees the efficiency and expertise to make your system a success.

The EPIC delivers:

- Color, touch & tilt-screen for near testing
- Facilitated testing and target fixation
- One-touch toggle for “Quick Refract” sequence
- Intelligent cross cylinder
- Three contrast and glare-testing modes
- 4' x 5' footprint
- Flash memory & EMR integration



Marco ▲ (800) 874-5274
www.marco.com

Circle No. 20

SYNEMED INTRODUCES AN EASY-TO-USE AND AFFORDABLE PERIMETER

Synemed, with over 30 years of visual field expertise, is proud to announce the latest line of perimeters. The Synemed EP-900 Series of full field, full-featured automated perimeters offers all of the features you need and want, and provides easy-to-interpret industry standard results. Models are user-friendly, with easy, two-button operation, provide the fastest test times and are easily upgradeable. Customize your own programs, combining advanced methodologies with a large selection of test patterns to screen in less than one minute and threshold in less than two minutes per eye. These all-encompassing systems are the only perimeter you'll ever need to ensure the most comprehensive patient care possible.



Synemed ▲ (800) 777-0650
www.synemed.com

Circle No. 21

SYNEMED EYESCAPE ADVANCED IMAGING SYSTEM

Canon CR2 Plus Digital Retina Camera with FAF (Autofluorescence) This Non-Myd camera offers all of the features of the CR2, with the addition of FAF. Now 18 Megapixels! Stereo Linking, SL integration, Mosaic, Multiple Filters, EMR integration, Screening Mode, and so much more.

See Synemed for:

- Software and database conversions
- Slit Lamp Imaging (For existing Slit lamps)
- We buy, sell and upgrade older non-mydratric retinal cameras.



Synemed ▲ (800) 777-0650
www.synemed.com

Circle No. 22

IBEX SLIT LAMP WITH MICRO-SURGICAL OPTICS DELIVERS MAXIMUM PERFORMANCE AND THE WIDEST FIELD OF VIEW

Ibex delivers an industry's first 43mm field of view at standard 6x magnification. This forward thinking design allows for increased observation in less time. Custom LED Illumination delivers the industry's brightest and most uniform illumination, with full spectrum wavelengths that have been synced to maximize anterior and posterior viewing. Isn't it about time you treated yourself to something better?TM



Trevi Technology ▲ (614) 754-7175
www.ibexeye.com

Circle No. 23

Knowing the osmolarity of your patient's tears is essential.

Diagnose with confidence, manage therapy, improve compliance, enhance patient education.

Ask us about **FREE** use of a TearLab with a test card commitment.

For more information, call 1-855-TearLab (832-7522) or visit @ www.tearlab.com



TearLab.

©2012 TearLab Corp. 920112 REV B

Circle No. 24

Simultaneous Stereo Photography

The Kowa nonmyd WX3D is the only digital 3D retinal camera on the market today that allows you to take a stereo image with a single flash!

Features:

- Kowa's exclusive single-flash stereo technology produces stereo images of the optic nerve with one click of the trigger button
- Supports the eye care providers' screening and evaluation of glaucoma
- Integrated mosaic function
- Simple and reproducible
- Retinal imaging process made quick and easy for both doctor and patient



Circle No. 25

20001 S. Vermont Ave. Torrance, CA 90502 800.966.5692 www.kowa-usa.com

Kowa
Kowa Optimed, Inc.

Smarter Versatility.

Kowa VX-20 mydriatic/ non-mydriatic Retinal Camera

With intuitive controls, advanced photography modes and innovative design, Kowa Optimed's VX-20 Retinal Camera is designed to make examinations easier and more productive for both the doctor and the patient.

Features:

- 5 photography modes, including fundus autofluorescence (FAF)
- Low-profile design fits your patients more comfortably, allowing for natural posture during the examination
- Simple to switch between myd and nonmyd mode
- In mydriatic mode, fundus can be observed through the optical viewfinder, for optimum image capture control



Circle No. 26

20001 S. Vermont Ave. Torrance, CA 90502 800.966.5692 www.kowa-usa.com

Kowa
Kowa Optimed, Inc.

Smarter Field

Kowa AP-7000 Automatic Perimeter

Features:

- Custom static perimetry test can be applied to abnormal sites on a fundus image such as a fundus photograph, OCT or SLO
- Equipped with analytical indices in line with guidelines for glaucoma
- Advanced network connectivity
- Wide variety of test and screening strategies
- Easy user interface
- True kinetic fields



Circle No. 27

20001 S. Vermont Ave. Torrance, CA 90502 800.966.5692 www.kowa-usa.com

Kowa
Kowa Optimed, Inc.



Your Patient Images, All In One Place.

To comprehensively manage your patients' diagnostic imagery by converging sources as varied as digital fundus cameras, slit lamps, visual field, OCTs and more, from initial testing through point of care, and even across different disciplines.

Circle No. 28

20001 S. Vermont Ave. Torrance, CA 90502 800.966.5692 www.kowa-usa.com

Kowa
Kowa Optimed, Inc.

Reliance 520® & 8700® Examination Chair and Instrument Stand

Reliance's new 520 chair integrates with the 8700 economy stand. The chair top reclines up to 40° while the patient maintains position. Key features include corded footswitch, dual-rotation locks, pneumatically assisted release mechanism and armrests that rotate up. Backlit switches on the 8700 control chair, stand and indirect lighting.

Customize the 520 with MyColor selections to match any office.



800.735.0357
haag-streit-usa.com

Circle No. 29

Reliance FX 920® Examination Chair

The FX 920 sets a new standard for design but it retains the core value of all Reliance products — rugged durability. All surfaces of the chair are designed to support a patient's entire weight. Ergonomic full power tilt is efficient for the practitioner as well as comfortable for the patient. A full complement of controls is available on both sides of chair and a detached dual footswitch adds flexibility.



800.735.0357
haag-streit-usa.com

Circle No. 30

7900 Instrument Stand

The Reliance 7900 Instrument Stand is the perfect complement to any Reliance Examination or Procedure chair. Manufactured from the same material as B1 Bombers, the 7900 is tough and scratch resistant. Includes refractor and slit lamp arms, and switches to control chair's hydraulic base. Available with, or without rechargeable instrument wells.



800.735.0357
haag-streit-usa.com

Circle No. 31

Stimuli® Advanced Version 4.0

The Stimuli is a refraction device that replaces an automated projector. By displaying images randomly, the Stimuli eliminates the memory effect. The Stimuli System, popular in private practices and clinic settings alike, includes the new 21.5" iMac Slim Line, and a remote control, contrast sensitivity test, and pediatric optotypes.



800.787.5426
haag-streit-usa.com

Circle No. 32

TONOSAFE® Tonometry Prisms Speed up Exams. Cut Infection Risk.

Tonosafe® disposable prisms eliminate the risk of cross-infection. They easily snap over the tips of Goldmann applanation tonometers, or Perkins tonometers. The prisms are developed for single patient use and only take a moment to position. Calibrated to Goldmann standards, the Tonosafe is the same mass as the Goldmann prism so no conversion of results is necessary.



800.787.5426
haag-streit-usa.com

Circle No. 33

LENSTAR® Optical Biometer Advanced Biometry - Better Outcomes

In less than 3 minutes, Haag-Streit's LENSTAR LS 900® captures 5 scans on both eyes with seven biometry measurements, including lens thickness. Each measurement can be validated for quality. Dual zone auto-keratometry equivalent to manual Ks, and auto-population of the data fields in the Holladay IOL Consultant and the Olsen formula, save time and improve outcomes.



*(The Holladay IOL Consultant and Olsen formula are not included with LENSTAR LS 900)



888.695.3678
myLENSTAR.com

Circle No. 34

BQ 900® LED Slit Lamp

Choose the BQ 900 LED for advanced microscopy. The IM 900® imaging module offers a fully integrated imaging solution with unique features and technology. Select accessories such as a teaching scope, inclined eyepieces, a Goldmann tonometer or the stereo variator for the retinal specialist. The convergent view of the BQ 900 LED offers a large binocular field with high resolution and depth of focus.



800.787.5426
haag-streit-usa.com

Circle No. 35

IM 900® Imaging Module

The Haag-Streit IM 900 complements the Haag-Streit BQ 900® Slit Lamp with integrated imaging features. Freeze technology captures the image at the exact moment the trigger is pressed. The history trigger can record the moments prior to the image capture and allowing the practitioner to review and select the best image. True aperture allows complete control of the depth of field.



800.787.5426
haag-streit-usa.com

Circle No. 36

CM 900® Camera Module

The CM 900 is available on and retrofits to any existing BP 900® LED or BD 900® Slit Lamp.

Freeze technology allows you to shoot the perfect image every time. Identify the shot area, and click. Digital video capture automatically begins. Depress the hands-free footswitch to shoot. Review on the monitor, choose from images before and after you clicked, pick the best shot.

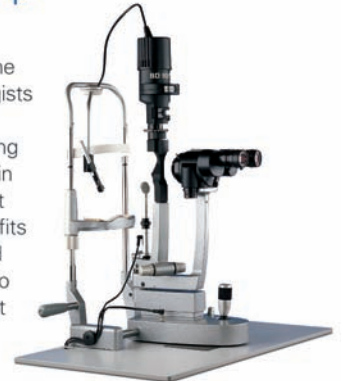


800.787.5426
haag-streit-usa.com

Circle No. 37

BD 900® Slit Lamp Ideal for Fitting Contacts

The BD 900® is optimized for the optometrists and ophthalmologists specializing in the anterior segment. It is also ideal for fitting contact lenses and for doctors in emergency rooms, who are not ophthalmologists. Optional video fits through a built-in port. Standard magnification adjusts from 10 to 16x times via a lever placed just beneath the microscope.



800.787.5426
haag-streit-usa.com

Circle No. 38

Octopus 300® Series Perimeters

The Octopus 300 Series provides a networkable and EMR ready solution (Pro model with EyeSuite) for all your perimetry needs. The 300 series is capable of performing a 2 ½ minute full-threshold test with Haag-Streit's TOP strategy. And with our eye tracking and fixation control, worries about reliability due to fixation losses are over.



800.787.5426
haag-streit-usa.com

Circle No. 39

Octopus 900® Versatility PLUS Connectivity!

The Octopus 900 is the most versatile perimeter available. The 900 features static White/White, Blue/Yellow, Red/White, Flicker, Low Vision testing and computer-assisted Goldmann Kinetic. The 900 series also comes with EyeSuite – the industry's most advanced software for progression analysis – including the first perimetric analysis to combine structure and function.



800.787.5426
haag-streit-usa.com

Circle No. 40

MARCO CUSTOMIZED LANE PACKAGES

Marco exam lane packages are creatively designed and engineered for the life of your practice. All of our diagnostic instruments — from chairs, stands, and slit lamps to refractors, lensmeters, and acuity systems — offer the most reliable, effortless operation in the industry. They simply work better because they're built better. This superior quality and craftsmanship is consistent throughout the entire product line, and is backed by Marco's exclusive guaranteed warranties.

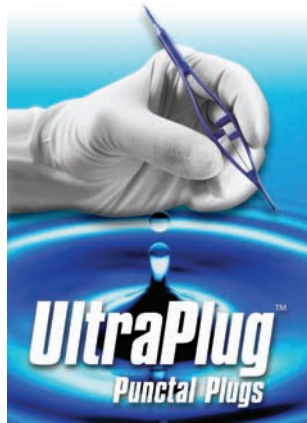


Marco ▲ (800) 874-5274
www.marco.com

Circle No. 41

ULTRAPLUG™ PUNCTAL PLUGS

Extend your treatment options with the UltraPlug™ line of punctal plugs. UltraPlug™ punctal plugs are available in long-term silicone, intermediate synthetic absorbable or short-term collagen product materials to best suit your treatment plan. UltraPlug™ silicone plugs feature a low-profile cap designed to virtually eliminate foreign body sensation and are pre-loaded on a sterile inserter/dilator.



Angiotech ▲ (877) 991-1110
www.sharpoint.com

Circle No. 43

THE NEXT GENERATION OF AMD GENETIC TESTING

Macula Risk® NXG combines the power of genetics with clinical status and environmental in a comprehensive AMD risk stratification tool. Administered through a cheek swab, Macula Risk NXG calculates a patient's risk of progression to advanced disease within 2, 5 and 10 years. Coupled with heightened professional care, at-risk patients can be monitored and treated before significant vision loss occurs, resulting in improved clinical outcomes.

Macula Risk[®] NXG
PREDICT AND PROTECT™



Arctic Group of Companies ▲ (866) 964-5182
www.macularisk.com

Circle No. 45

SMART SYSTEM® 20/20

Just the way you like it.

Our Smart System® software has CustomLink™ so you can tailor the input device to exactly how you like it!



Circle No. 42

M&S The First Choice in
TECHNOLOGIES Vision Testing Systems
® (877) 225-6101
www.mstech-eyes.com

©2013 M&S Technologies, Inc. Smart System and M&S are registered trademarks of M&S Technologies, Inc. Patents Pending. All Rights Reserved.

NEW - (TWO SETS IN ONE) PRISM SET & STICK PRISM SET

Magnetic prisms handles on prisms provide better control and less rotation, making them much faster, more precise, cleaner (less fingerprints on the prism) with less fumbling in use when examining patients. For over 75 years, Gulden has provided vision care professionals with the instruments to detect and diagnose visual problems ... and the tools to improve, enhance, and rehabilitate patients' vision. Visit our website for more time-saving tools.



Gulden Ophthalmics
Time Saving Tools

Gulden Ophthalmics ▲ (800) 659-2250
www.guldenophthalmics.com

Circle No. 44

NO PUFF NO DROPS

Icare is an advanced medical technology company manufacturing Icare® Tonometers for measuring Intraocular Pressure (IOP) with unique, patented rebound technology, which enables quick and painless measurement with no drops or air. Intelligent, easy-to-use and patient-friendly, Icare® has over 30,000 satisfied users in over 50 countries.



icare

Icare U.S.A. ▲ (919) 624-9095
www.icare-usa.com

Circle No. 46

ISTAND™ - EXPAND THE CLINICAL UTILITY OF THE IVUE SD-OCT

- Enhance clinical decisions, procedure planning, documentation and follow patients from diagnosis through post-op
- Simple, easy-to-use articulating arm for universal positioning
- Ability to scan supine patients as well as patients in various other positions
- Easily move the iVue SD-OCT between the exam lane, procedure room, hospital facilities and satellite offices



Optovue, Inc. ▲ (866) 344-8948
www.optovue.com

Circle No. 47

RTVue VTRAC Premier™ SD-OCT



Real Time Active Eye-Tracking OCT

The Only OCT-Based Cornea Power Available in the Market

RTVUE VTRAC™
PREMIER
by optovue



Optovue, Inc. ▲ (866) 344-8948
www.optovue.com

Circle No. 48

ODYSSEY MEDICAL, LEADER IN PUNCTAL OCCLUSION, OFFERS THE PARASOL®

Odyssey Medical offers the Parasol® Punctal Occluder, the #1 choice for punctal occlusion. The Parasol's unique design is exceptionally easy to insert, requiring little or no dilation. Simple sizing means two sizes fit virtually all. In addition, Odyssey offers guaranteed retention with an industry-high 92% retention rate. Odyssey also offers short-term, temporary occlusion products such as Collagen and EXTEND™ as well as a variety of dry eye diagnostic tests.



ODYSSEY

Parasol®
ODYSSEY

Odyssey ▲ (888) 905-7770
www.odysseymed.com

Circle No. 49

IVUE®—VERSATILITY IN SPECTRAL-DOMAIN OCT.

iVue is the most versatile/compact Spectral-Domain OCT in the world for eye-care professionals.

- High-resolution B-scans & Retinal Thickness Mapping aid in identifying/tracking retinal disease
- RNFL Thickness & TSNIT Analysis help identify RNFL loss
- "GCC" Ganglion Cell Complex Scan to help identify early glaucomatous damage
- Angle Measurement & Full Pachymetry Mapping provide the tools to aid in anterior segment assessment
- 3D/En Face Analysis Scan Upgrade with 67 million data points to detect micro pathology earlier



Optovue, Inc. ▲ (866) 344-8948
www.optovue.com

Circle No. 50

OMEGA 500 BIO—AVAILABLE IN UNPLUGGED

The OMEGA 500 is the only BIO on the market constructed with no compromises. The all metal optics offer unequalled durability; the small pupil function features no limiting presets; and the Xenon Halogen Bulb provides near perfect color rendering. The OMEGA 500 is available with a variety of power sources, including the UL-Approved UNPLUGGED allowing you to work anywhere without cords or cables.



Heine USA ▲ (800) 367-4872
www.heine.com

Circle No. 51

HAND HELD OPHTHALMIC INSTRUMENTS

HEINE BETA instruments are designed to offer a lifetime of performance and reliability. As a company that controls all aspects of design and manufacture, we stand behind our BETA line with a new and unprecedented Lifetime Service Guarantee. How many others offer such a guarantee? We can because our Instruments are held to a higher standard, the HEINE standard.



Heine USA LTD ▲ (800) 367-4872
www.heine.com

Circle No. 52

Reichert® Auto Lensometer®

AL200 · AL500 · AL700

Reichert® offers a complete line of auto lensometers to meet your needs and budget. Designed to eliminate the subjective nature of manual lensometer readings, our auto lensometers reduce operator error and provide repeatable, objective measurements every time. Whether a horizontal or vertical orientation, the Reichert® AL200®, AL500 and AL700 are all easy to use and highly accurate offering push-button controls, easy to read, high contrast LCD screens and icon-based operating systems.



MADE IN THE USA

Circle No. 53

www.reichert.com · Toll Free 888.849.8955



Reichert® Reflex™

Ultrasound Biomicroscope

Imaging structures of the eye has never been easier. The all-in-one Reichert® Reflex™ Ultrasound Biomicroscope is compact and extremely intuitive. Utilizing the innovative ClearScan® ultrasound probe cover makes the exam fast and convenient for the operator and comfortable for the patient. Optional B-scan probes are also available for imaging the posterior.



MADE IN THE USA

Circle No. 54

www.reichert.com · Toll Free 888.849.8955



Reichert® 7 & 7CR

Non-Contact Tonometers

In 1972, we invented the non-contact tonometer (NCT). After 40 years, Reichert® continues to offer the most accurate, trusted and complete line of NCTs. From the effortless one-button simplicity of the Reichert® 7 Auto Tonometer to the advanced Reichert® 7CR Auto Tonometer + Corneal Response Technology, which provides Corneal Compensated IOP (IOPcc)... Reichert® has a non-contact tonometer that suits your needs.



MADE IN THE USA

Circle No. 55

www.reichert.com · Toll Free 888.849.8955



Ocular Response Analyzer®

The New Physics of Glaucoma.

Ocular Response Analyzer® provides the world's only direct measurement of corneal biomechanical properties. Corneal Hysteresis is an indicator of the visco-elastic properties of the cornea and is independently predictive of glaucoma progression. In addition, it is useful in diagnosing corneal pathologies and refractive surgery pre-screening. The instrument also presents IOPcc, a measure of intraocular pressure that is less affected by corneal properties, such as resistance and thickness.



MADE IN THE USA

Circle No. 56

www.reichert.com · Toll Free 888.849.8955



Tono-Pen AVIA® & Ocu-Film®

The World's Leading Handheld Tonometer.

Tono-Pen® is the industry standard handheld applanation tonometer, trusted by doctors and technicians for 30 years. The Tono-Pen AVIA® requires no daily calibration while the ergonomic design makes it ideal for left or right handed users. Advanced electronic measurement technology enables operators to take fast, accurate IOP measurements.



Protect your Tono-Pen® and patients with genuine, FDA approved Reichert® OCU-FILM® + Tip Covers.



MADE IN THE USA

Circle No. 57

www.reichert.com · Toll Free 800.TONO.PEN



iPac® Pachymeter

The New Standard For Handheld Pachymetry.

Loaded with impressive features such as Bluetooth® wireless connectivity, one-button navigation, rotating color LCD screen and rechargeable lithium ion battery, the all new iPac® Pachymeter is the most advanced handheld pachymeter available. This easy-to-use, lightweight handheld instrument includes an intuitive user interface controlled by a single 5-way button. With the iPac®, exams become more efficient for you and your patients.



MADE IN THE USA

Circle No. 58

www.reichert.com · Toll Free 888.849.8955



RK600

Auto Refractor/Keratometer

The RK600 offers fast, easy and accurate refraction and keratometry measurements with the option of automatic or manual modes. Menu settings allow the instrument to be customized to your needs and preferences. The RK600 is compact, lightweight and incorporates a thermal printer to provide a hard copy printout of results. Data can also be transferred to EMR systems.



Circle No. 59

Reichert
TECHNOLOGIES
Advancing Eye Care. Preserving Sight.™

www.reichert.com · Toll Free 888.849.8955

AMETEK

Endurance™ Tilt Chair & Stand

Unparalleled Strength & Elegance.

The Endurance™ Tilt Chair and Instrument Stand is highlighted by a performance driven design that's built to last. The deep cushions and generous seat width offer comfort and capacity. The Swiss-made linear actuator provides a maintenance free alternative to hydraulic lifts. With an effortless 45° tilt angle and 360° rotation, any exam room staff member may easily maneuver the Endurance™ Tilt Chair. The Endurance™ Instrument Stand offers flexibility when configuring your exam lane.



Circle No. 60

Reichert
TECHNOLOGIES
Advancing Eye Care. Preserving Sight.™

www.reichert.com · Toll Free 888.849.8955

AMETEK

Reichert® Phoropter®

The first and best refracting instrument continues to be the industry standard for over 80 years, with unmatched optical quality, accuracy and reliability. Whether its our Ultramatic RX Master™ or the Illuminated Phoropter®, the smooth rotation of the dials, the virtual absence of play in the mechanisms, and the precise, solid click of the control knobs are constant reminders that you're using the world's finest refracting instrument.



MADE IN THE USA

Circle No. 61

Reichert
TECHNOLOGIES
Advancing Eye Care. Preserving Sight.™

www.reichert.com · Toll Free 888.849.8955

AMETEK

Auto Phoropter RS®

Auto Refraction System

The Auto Phoropter RS® offers the most compact design and quick, quiet lens exchange available for efficient refraction. The intuitive keyboard controls can give the user the capacity of doing all refraction functions with the touch of a few buttons.



Key-controlled software packages interface with various brands of lensometers and autorefractor/ keratometers.

The Auto Phoropter RS® is also compatible with EMR systems.

MADE IN THE USA

Circle No. 62

Reichert
TECHNOLOGIES
Advancing Eye Care. Preserving Sight.™

www.reichert.com · Toll Free 888.849.8955

AMETEK

ClearChart® 2

Digital Acuity System

ClearChart® 2 is a complete all-in-one system for your acuity testing needs. Free of fans, hard drives and moving parts, ClearChart® 2 is the only purpose-built digital acuity solution available. This dependable system features a 19-inch screen, Sine-wave grating contrast sensitivity testing, patient education slides and a full complement of optotypes and special test charts.



MADE IN THE USA

Circle No. 63

Reichert
TECHNOLOGIES
Advancing Eye Care. Preserving Sight.™

www.reichert.com · Toll Free 888.849.8955

AMETEK

Reichert® XCEL® Slit Lamps

Reichert Technologies® offers slit lamps to meet your needs and budget. The XCEL® family of slit lamps offers high quality optics for image clarity and detail. Engineered for easy and smooth maneuverability, XCEL® slit lamps come in two traditional designs with 3 or 5 times magnification (within the range of 6X, 10X, 16X, 25X, and 40X) and multiple filter options including neutral density.



Applanation tonometers are available with all Reichert® slit lamps as accessories.

Circle No. 64

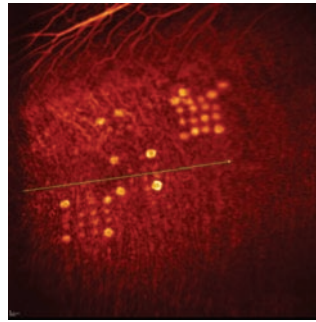
Reichert
TECHNOLOGIES
Advancing Eye Care. Preserving Sight.™

www.reichert.com · Toll Free 888.849.8955

AMETEK

ENDPOINT MANAGEMENT WITH LANDMARK PATTERNS

Endpoint Management is now available to PASCAL Laser systems. It utilizes advanced algorithms to control power and exposure of the laser, allowing either visible or non-visible applications. Landmark Patterns give an added level of support by "landmarking" the periphery of the applied pattern. When setting to a sub-visible level, Landmark gives feedback on treatment dose, location and uptake in the retina.



Topcon Medical Laser Systems ▲ (888) 760-8657
www.topconmedical.com/lasers

Circle No. 65

PASCAL STREAMLINE 577 LASER SYSTEM

PASCAL Streamline 577™ combines the optimum 577nm wavelength with the most complete and comprehensive scanning laser configuration. The Streamline 577 offers ophthalmologists a superior treatment solution.

The combined absorption by both melanin and the oxyhemoglobin makes the 577 more efficient. Energy is concentrated to a smaller volume allowing use of lower powers and shorter pulse durations, resulting in less pain.



Topcon Medical Laser Systems ▲ (888) 760-8657
www.topconmedical.com/lasers

Circle No. 66

EYECANHEAR INTRODUCES PERSONALIZED LIFESTYLE HEARING™ FOR YOUR PATIENTS.

Expand the clinical care of your aging patient demographic by integrating a compliment of hearing services that addresses your patient's hearing deficit and their ability to maintain an independent quality of life. Personalized practice offerings from Comprehensive Hearing, our turn key approach, to Direct Growth Services, helping those with an existing hearing program drive better outcomes through a Patient-Centric Approach & EyeCanHear management expertise.



EyeCanHear, LLC ▲ (941) 893-2500
www.eyecanhear.com

Circle No. 67

NEW STEREOPSIS TESTS

NEW Features Include:

- Expanded Graded Circle Test from 400 Sec NOW DOWN TO 20 sec
- New Technology, which Eliminates Monocular Clues
- Answer Key Now Integrated on Test Booklet Cover
- Lea Symbols, the Most Internationally Recognized Symbols for Testing Children
- BOTH Adult & Pediatric Polarized Viewers Included
- Durable Booklet
- NEW Low Price.



Vision Assessment Corp. ▲ (866) 887-9692
www.visionassessment.com

Circle No. 68

EYE DESIGNS CUSTOM INTERIORS & FURNITURE

Eye Designs is the industry leader in the creation of effective ophthalmic office planning and unique merchandising systems that enhance your patient's experience. Choose from a large selection of display furniture styles that fit any budget or personality.

- Space Planning
- Interior Design
- Display Innovation
- Manufacturing



Offering Complimentary...
Space Planning,
3-D Renderings and
On-Site Consultation

Eye Designs ▲ (800) 346-8890
www.eyedesigns.com

Circle No. 69

NEW PASS Test



(Preschool Assessment of Stereopsis with a Smile)

Depth perception test for School Assessment of stereopsis in children and non-readers (P/N 1012)

- Includes
- 4 Cards (480, 240, Demo & Blank) with Carrying Case
 - Pair of Pediatric Polarized Viewers
 - Pair of Intermediate Polarized Viewers

Basic (P/N 1011) & Quantitative (P/N 1013) Kits Also Available



Licensed from the Pennsylvania College of Optometry at Salus University. All Rights Reserved.

As adapted from the Vision In Preschoolers (VIP) Study, (sponsored by the National Eye Institute of the National Institutes of Health of the Department of Health and Human Services).



Vision Assessment Corp. ▲ (866) 887-9692
www.VisionAssessment.com

Circle No. 70

Digital Imaging Anywhere!

New VantagePlus Digital Ophthalmoscope

Keeler leads the way again with the first digital binocular indirect system. Not old analog video but true digital imaging.

The intuitive and powerful software allows you to use your laptop or any usb interface to optimize the examination, provide still or dynamic images, which aid in the documentation and diagnosis of your patient.

Increase your practice profile by educating your patients and their family with digital dynamic imaging in your office.



Now with Windows 7 or XP!

Buy Online!
keelerusa.com

Keeler

Keeler Instruments, Inc. ▲ (800) 523-5620
www.keelerusa.com

Circle No. 71

Another Bright Idea From Keeler

NEW - VantagePlus LED Slimline with Convertible Technology.

(Neutral LED & Xenon illumination)

-  Longest life – 10,000 hours, brightest, better detail.
-  25% brighter than standard bulbs.
-  New Slimline battery, lightest and fits in your hand.
-  Combined LED & Lithium Polymer battery can provide up to 6 hours of use on a single charge.



Be the envy of all your peers and ask for a **free, no obligation demonstration!**

Buy Online!
keelerusa.com

Keeler

Keeler Instruments, Inc. ▲ (800) 523-5620
www.keelerusa.com

Circle No. 72

...less has never meant more.

Pulsair IntelliPuff® Tonometer

Less is more.

The Keeler intelligent puff system giving you a quantum leap forwards in accuracy and ease of use. IntelliPuff® embodies electronic and optical technology to deliver you the speed, accuracy and ease of use you and your patients deserve.

Easiest To Use
Smallest Footprint
Lowest Price



Buy Online!
keelerusa.com

Keeler

Keeler Instruments, Inc. ▲ (800) 523-5620
www.keelerusa.com

Circle No. 73

...less has never meant more.

Pulsair Desktop Tonometer

Less is more.

Pulsair Desktop is uncomplicated and therefore quick to use for the novice and professional alike. Taking control of tonometry has never been easier or faster. Clear user controls and a color video alignment screen combine to set a new standard in usability.

Easiest To Use
Smallest Footprint
Lowest Price



Buy Online!
keelerusa.com

Keeler

Keeler Instruments, Inc. ▲ (800) 523-5620
www.keelerusa.com

Circle No. 74

KAT – Keeler Applanation Tonometers

Reliable and Repeatable Applanation Tonometry

Keeler now manufactures applanation prisms which fit most common applanation tonometer mounts.



Buy Online!
keelerusa.com

Keeler

Keeler Instruments, Inc. ▲ (800) 523-5620
www.keelerusa.com

Circle No. 75

Keeler Cryomatic

The Standard in Cryo-Surgery

The Keeler, CryoMatic is the first ophthalmic cryo-system with **cryosmart technology**. The console has a built-in monitoring system which self-adjusts the optimal operating parameters for any given probe. The CryoMatic offers the surgeon and his staff a system which performs time after time.

- Disposable & Reusable Probes.
- Automatic Gas Adjustment, any probe will perform optimally.
- Fast Freeze and Defrost, for ease of use.
- No manual adjustments, easy set-up.



Buy Online!
keelerusa.com

Keeler

Keeler Instruments, Inc. ▲ (800) 523-5620
www.keelerusa.com

Circle No. 76

Introducing **composites** by Moria



High quality reusable ophthalmic surgical instruments
Surgical stainless steel tips and durable handles of a composite polymer
Performance equivalent to the best all-metal instruments,
at significantly lower prices

Circle No. 77

Moria, Inc. • 1-800-441-1314 • moria@moriausa.com • www.moria-surgical.com

Introducing **Moria one** Single-Use Adjustable Vacuum Trepine

The first disposable trephine with
an adjustable depth setting - 50- μ m
increments from 200 to 1200 μ m

Limbal suction - significantly more
efficient than other single-use trephines

Supports both sides of the blade
to produce straight-walled cuts

Gunsight support - easy and
reliable to center, no parallax errors

Ultra-sharp, thin, symmetrically
edged blade

Circle No. 78

Depth Adjustment Ring

Moria, Inc. • 1-800-441-1314 • moria@moriausa.com • www.moria-surgical.com **Moria**



CASSINI: COLOR LED TOPOGRAPHY

Corneal topography with submicron
accuracy and unprecedented precision is
ideal for fast and easy contact lens fitting
and early keratoconus detection.

- Contact-free corneal topography
- Corneal wavefront analysis
- Dry eye topography
- Submicron accuracy
- Precise topographic maps and datasets
- Full color, high-resolution eye image
- EasyConnect to 3rd party (fitting) software
- Keratoconus module



FIRST TIME RIGHT, ALWAYS. CASSINI

i-optics

i-Optics ▲ (888) 660-6965
www.i-optics.com

Circle No. 79

EASYSKAN: SMART RETINAL IMAGING

EasyScan is an ideal zero-dilation retinal
imaging system for the diagnosis of di-
abetic retinopathy, AMD, and glaucoma.

- Highest contrast: Confocal SLO
- Capture mode: Green, near infrared and (pseudo) color
- Pupil size: 2.0 mm
- Autofocus and autocapture
- EasyConnect (with your network)
- Telediagnosis (optional)
- Pay per patient (optional)
- Ultra compact: < 7 kg



SEE THINGS DIFFERENT

i-optics

i-Optics ▲ (888) 660-6965
www.i-optics.com

Circle No. 80

THE LATEST TRS AUTOMATED REFRACTION SYSTEM

The TRS-5100 is controlled with a
programmable keypad, and when
connected to the OPD-Scan III, delivers
refractions in a fraction of time it takes
with traditional methods. The time saved
in collecting data provides more time for
patient consults and optical. It allows the patient to simultaneously
view their old and new Rx selections including day and night vision
differences. The TRS makes your life easier and more efficient—
while giving the patients a faster more accurate and positive exam
experience. This entire refraction process increases staff efficiency,
maximizes patient flow, and increases overall practice revenue
and referrals. The TRS is equipped with
“Marco Connect” SM software and is
EHR/EMR compatible.



MARCO

Marco ▲ (800) 874-5274
www.marco.com

Circle No. 81

Introducing a new ONE-WEEK modality...

icuity^{H2O}

For patients who would benefit from a more frequent replacement,
but don't want to incur the cost of a daily disposable.

Why one week?

- Cleaner lenses and fewer dry eye symptoms
- An economical solution to one-day
- Enhanced compliance — weekly replacement is easy: start a new week - start a new lens.



Circle No. 82

Hydrogel Vision Corp. ▲ (877) 336-2482
www.hydrogelvision.com

OPMI Lumera Surgical Microscope and RESIGHT Fundus Viewing System

The OPMI Lumera® represents the pinnacle of surgical visualization for all areas of ophthalmic surgery, featuring unique technologies like:

- **Patented Stereo Coaxial Illumination™ (SCI™)** for a brilliant red reflex
- **Xenon illumination** projects a whiter, more natural light for greater detail recognition and contrast
- **RESIGHT®** provides an outstanding edge-to-edge view of the retina
- **Fully integrated HD video** with recording



Circle No. 83



We make it visible.

Carl Zeiss Meditec, Inc. | Toll free: 800 342 9821 | www.meditec.zeiss.com/pg-lumera

Humphrey Field Analyzers (HFA)

- HFA™ is **DICOM-compliant** and shares data with EMRs
- **Guided Progression Analysis™ (GPA™)** offers one-page summary reports and enables you to easily track progression over time
- **Visual Field Index™ (VFI™)** software allows you to look at one number that scores and summarizes your patients' exams with fields from age-matched normative data
- **FORUM® Eye Care Data Management** offers HFA-Cirrus Combined Reports



Circle No. 84



We make it visible.

Carl Zeiss Meditec, Inc. | Toll free: 800 342 9821 | www.meditec.zeiss.com/pg-hfa

The New IOLMaster 500 for Biometry

For cataract surgeons worldwide, the IOLMaster® is the gold standard in biometry. The new IOLMaster 500 is the next generation of this optical technology with features that expand patient applications and further improve office workflow.

- Fastest measurement speed – up to four times faster than other optical devices¹
- Best cataract penetration²
- **Holladay 2** formula integrated into the software
- On-board **Haigis-L** formula for post-LASIK eyes



Circle No. 85



We make it visible.

1 Chen YA, Hirschall N, Firdi O. Evaluation of 2 new optical biometry devices and comparison with the current gold standard biometer. *J Cataract Refract Surg.* Mar. 2011;37(3):513-517.
2 Data on file

Carl Zeiss Meditec, Inc. | Toll free: 800 342 9821 | www.meditec.zeiss.com/pg-iolmaster

Fundus Cameras from Carl Zeiss

VISUCAM^{PRO MM}, VISUCAM^{MM/FA}

- All-integrated design for patient management, capture, review and patient education
- Non-mydratric imaging – 3.3 mm pupil size
- Optional FAF and ICGA (VISUCAM^{MM/FA})



Circle No. 86



We make it visible.

FF 450^{plus} w/ VISUPAC®

- Combines renowned optical performance with high-resolution sensor technology to meet individual needs
- Fully featured Image Management Suite for measurements, annotations, reports

Carl Zeiss Meditec, Inc. | Toll free: 800 342 9821 | www.meditec.zeiss.com/pg-cameras

VISULAS Family of Therapeutic Lasers

- Powerful laser technology and ergonomic design with various accessories
- Complete laser family with Photodisruption and Photocoagulation models
- Combination units of YAG III and either 532s or Trion – space-saving and economical
- Integrated ZEISS Laser Slit Lamp with high transmission optics
- **VITE** option for faster and more comfortable multi-spot photocoagulation



Circle No. 87



We make it visible.

Carl Zeiss Meditec, Inc. | Toll free: 800 342 9821 | www.meditec.zeiss.com/pg-lasers

ATLAS 9000 Corneal Topography System

- Patented Cone-of-Focus™ Alignment System and Arc-Step Algorithm deliver sub-micron elevation accuracy
- SmartCapture™ Image Analysis analyzes 15 digital images per second and automatically selects the highest quality images
- Includes Axial, Tangential, Elevation, Irregularity, Keratometry, Corneal Wavefront, Mean Curvature, Image Simulation views
- Optional Pathfinder™ II Corneal Analysis and Masterfit™ II Contact Lens Software further increase functionality
- Review Software allows dynamic remote access to all exams



Circle No. 88



We make it visible.

Carl Zeiss Meditec, Inc. | Toll free: 800 342 9821 | www.meditec.zeiss.com/pg-atlas

HUVITZ DIGITAL IMAGING

The Huvitz HIS-5000 Clinical Imaging Solution can be added to most slit lamps on the market. It is designed to seamlessly integrate into your binocular optical system. No more unsightly beam splitter, relay lens and external CCD camera. The universal C mount design is compatible with most Galilean style slit lamps. Add digital imaging to your slit lamp at an affordable price.

The Huvitz Clinical Software includes:

- HIS-5000 Integrated Digital Camera
- HIS-5000 Imaging Software
- \$3,995.00



Circle No. 89

HUVITZ HDC-7000 VISUAL ACUITY SYSTEM

The Huvitz HDC-7000 Visual Acuity System offers maximum versatility and adaptability. The 41 standard charts include binocular balance, anisokonia, stereopsis and binocular fusion charts. The random display function makes it impossible for the patient to memorize the chart contents.

Features:

- Programmable buttons on the remote control
- Contrast sensitivity adjustment is standard on most charts
- Color blindness and educational images are standard
- Compatible with the CDR-3100 and the HDR-7000 Digital Refraction System
- Precise calibration for exam distances from 8' to 20'
- Install on LCD monitors ranging from 17" to 24" in size.

Packages starting at \$995.00



Circle No. 90

Veatch Instruments ▲ (800) 447-7511
www.veatchinstruments.com

RESEEVIT™ EVOLUTION THE TOTAL DIGITAL IMAGING SOLUTION

ReSeeVit™ has been the industry leading imaging software suite since 1992. What began as a single device to “store and forward” anterior segment images has grown into the most complete suite of digital imaging products available on the market. Modules include: Anterior Segment, Retina, Endothelium and WaveFront corneal topography.

Features:

- Robust EMR Integration
- IHE (Integrating the Health Enterprise) certified
- DICOM Compliant with full IHE Workflow
- Linear Measurement Capabilities in millimeters
- Video and Still Image Capture
- Integrated Interpretation and Report imbedded into exam
- Cup to Disc Measurement



Circle No. 91

Veatch Instruments ▲ (800) 447-7511
www.veatchinstruments.com

AP-1000 PERIMETER

The AP-1000 is designed to provide many years of reliable trouble free operation. It utilizes long life LED technology, no motors, and requires no routine maintenance. Sophisticated software tool allows complete monitoring and assessment of visual field regression.

- Modern Eye Tracking System
- Customized Test Programs
- Driving Test
- External PC



Circle No. 92

Veatch Instruments ▲ (800) 447-7511
www.veatchinstruments.com

OWRx DIGITAL EYE EXAM Optimized WaveFront Refraction

The complete Digital Eye Exam is made possible with our Huvitz refracting technology. Fewer “which is better 1 or 2” questions reduces your patients confusion, and provides a superior exam experience. No more tired shoulders and backache at the end of the day. **Enhance your refracting;** provide better vision for your patients and **Go digital!**

- Reduce stress and strain
- Increase patient throughput
- Increase revenues
- Patient **WOW** factor!

OWRx
Digital Eye Exam



Enjoy Refracting Again!

Circle No. 93

Veatch Instruments ▲ (800) 447-7511
www.veatchinstruments.com

OWRx truefit DIGITAL DISPENSING Optimized WaveFront Refraction

The truefit Digital Dispensing thoroughly engages the patient in the highly personalized selection of frames, lenses, premium upgrades, and even colored contacts. It gives opticians the technology to obtain both amazingly accurate measurements and meaningful patient responses to ensure the best possible results. **Enhance your dispensing;** provide better vision for your patients and **Go digital!**

- Sonar based
- No frame attachments
- Reduce remakes
- Frame try on



Circle No. 94

Veatch Instruments ▲ (800) 447-7511
www.veatchinstruments.com

TOMEY TL-2000C AUTO LENSMETER

has a 5.7 inch Color TFT LCD with touch panel and built-in printer.

The TL-2000C Auto Lensmeter can measure Standard & High index, Bifocal, Trifocal, Progressive and Prism Lenses. In addition, it can also give measurement of hard and soft contact lenses.



Tomey ▲ (888) 449-4045
www.tomeyusa.com

Circle No. 95

TOMEY EM-3000 SPECULAR MICROSCOPE has the *first* touch screen!

Tomey has introduced a new advanced specular microscope. The EM-3000. Its color touch screen allows ease of operation and speed in its results. It will also measure the thickness of the cornea. It has an internal computer that automatically analyzes the cells. Seven fixation targets make peripheral photography a snap. More cells are counted for greater accuracy.



Tomey ▲ (888) 449-4045
www.tomeyusa.com

Circle No. 96

TOMEY TMS-4 CORNEAL TOPOGRAPHER better resolution, accuracy, and coverage than any other product in the world including wavescans and has dry eye software inside.

The unit comes complete with Klyce corneal statistics software, Keratoconus screening software, contact lens fitting software, Klyce Maeda Multiple Regression Analysis, Smolek-Klyce Classification Neural Network with bit image format. Easily networked.



Tomey ▲ (888) 449-4045
www.tomeyusa.com

Circle No. 97

TOMEY RT-7000 AUTOREFRACTOR/ KERATOMETER/TOPOGRAPHER The 3-in-1 instrument with easy and speedy touch screen alignment and auto shot. Includes built-in computer and on-board printer. Dry eye software inside.

Two CCD cameras capture images providing highly accurate measurement data. Includes diameter measurement of cornea and pupil. The Indices of KAI and KRI that show Corneal Irregular Astigmatism displayed with three levels (A•B•C) at Keratometry. Absolute and Normalized color maps can be viewed for contact lens fitting and Corneal Eccentricity Index of Ortho-K Lens. TSAS (tear stability analysis software) included.



Tomey ▲ (888) 449-4045
www.tomeyusa.com

Circle No. 98

TOMEY SP-100 HANDY PACHYMETER

Tomey introduces the latest advancement in pachymetry... the SP-100 Hand-held pachymeter with built-in printer and IOP Calculations.

Measurements are simple and quick using the TOMEY tone-assisted measurement system. Weighs only 19 ounces and comes with a long-lasting rechargeable lithium battery. Angled, straight, and disposable probes available.



Tomey ▲ (888) 449-4045
www.tomeyusa.com

Circle No. 99

TOMEY RC-5000 AUTOREFRACTOR/ KERATOMETER The *FIRST* touch-screen with automatic measurement...TOMEY RC-5000 Auto Refkeratometer with built-in printer—the fastest and easiest to use.

The advanced touch-screen display allows you to perform both refraction and keratometry automatically with one simple movement. Capture one eye on the display by touching the center of the pupil on the display with your fingertip and the RC-5000 will automatically align and begin measurement.



Tomey ▲ (888) 449-4045
www.tomeyusa.com

Circle No. 100

OCULUS CENTERFIELD® 2 PERIMETER

The Centerfield® 2 is a Goldmann standard perimeter. It is capable of 70° static and kinetic visual field testing and color perimetry. 30-2, 24-2 and 10-2 or customizable test patterns. Suitable for both screening and full threshold exams. Includes Glaucoma staging program, Glaucoma progression analysis and the new SPARK test strategy. EMR ready.



Call today for more information and a FREE in-office demo!

Oculus, Inc. ▲ (888) 284-8004
www.OculusUSA.com

Circle No. 101

OCULUS EASYFIELD® C PERIMETER

This compact, lightweight Goldmann standard perimeter is capable of full threshold test in under 3 min. The new eye shields eliminate the need for the eye patch and the new vertically adjustable chinrest offers maximum patient comfort. 30-2, 24-2 and 10-2 or customizable test patterns. Suitable for screening and full threshold exams. Includes Glaucoma staging program, Glaucoma progression analysis and the new SPARK test strategy. EMR ready.



Call today for more information and a FREE in-office demo!

Oculus, Inc. ▲ (888) 284-8004
www.OculusUSA.com

Circle No. 102

ACCUTOME RX

Accutome Rx is a full service ophthalmic company offering diagnostic and surgical products. We offer fast and friendly service with no minimums.

Call today or visit our newly revamped web site for easy ordering and specials.



Accutome ▲ (800) 979-2020
www.accutome.com

Circle No. 103

ACCUTOME B-SCAN PLUS

- Image is Everything—0.015 mm Resolution is the Highest in the Medical Industry.
- State-of-the-Art Probe Design—Sharper, more Focused Images due to the Elimination of Signal Loss.
- “Smooth Zoom” Technology—The only unit with 2x full image zoom without distortion of real-time or captured scans.
- Portable—Plug Probe into any Laptop or PC and Go.
- Never Miss an Image—Unlimited 34 Second Film Loops.
- Creates Reports in Seconds—Built in Report Template Containing Image, Diagnosis, Patient and Facility Information.
- Share Information Easily—Adaptable Document Transfer via Paperless Office, Email or Printer.
- Compact File Storage—Unsurpassed by the Competition.
- Protect Your Investment—Easily Upgradeable Software.
- Master in Minutes—User-friendly Interface makes the Complex Easy.



Accutome ▲ (800) 979-2020
www.accutome.com

Circle No. 104

OPD-SCAN III

Beyond the ability to gather an autorefraction, keratometry, pupillometry, corneal topography and wavefront aberrometry in ~10 seconds per eye, the OPD-Scan III adds over 20 diagnostic features never before in one combined workstation.

- Angle Kappa for multi-focal implants
- Retro illumination image displays cataracts, post-op toric IOL alignment, haptics, etc...
- SA of Cornea for Aspheric IOL selection
- Average Pupil Power for post LASIK calculations (APP on ASCRS IOL calculator)



Choosing the right IOL for your patients based on their visual system leads to better outcomes.



Marco ▲ (800) 874-5274
www.marco.com

Circle No. 105

NEW GULDEN OPHTHALMICS ILLUMINATED NEAR CARDS

These will be the last Near Cards you'll ever buy! Never yellows! Always bright! Print will never wear off! Use to emulate a computer screen at near.

Well protected in a rubberized sure grip frame. Features that include: self-illumination; high-resolution, digital photographic characters. Additional inserts are available—illuminated Near Sloan Number Card; Near Lea Number, Amsler Grid, Lea Symbol, 3 Meter Sloan Letter, 3 Meter Lea Number, Near E, Landolt C and HOTV. (Inserts and Phoropter Adapter sold separately.)



Gulden Ophthalmics ▲ (800) 659-2250
www.guldenophthalmics.com

Circle No. 106

OCULUS BINOPTOMETER 4P

The new OCULUS Binoptometer 4P is a unique device for testing the visual acuity, contrast sensitivity and color vision. The test options are virtually unlimited. Other features include the adjustable viewing angle, modifiable examination distance, ease of use and light weight. The unit is operated by a laptop or PC and exams are saved automatically. EMR ready.

Call today for more information and a FREE in-office demo!



Oculus, Inc. ▲ (888) 284-8004
www.OculusUSA.com

Circle No. 107

OCULUS CORVIS® ST TONO/PACHYMETER

The new OCULUS Corvis® ST is a breakthrough in the IOP measurement. Equipped with an ultra high speed Scheimpflug camera, this advanced diagnostic device records the reaction of the cornea due to an air pulse and precisely measures the corneal thickness and the intraocular pressure. EMR ready.

Call today for more information and a FREE in-office demo!



Oculus, Inc. ▲ (888) 284-8004
www.OculusUSA.com

Circle No. 108

OCULUS PARK 1® (PACHY+AUTOREF+KERATOMETER)

Put your practice in overdrive with the OCULUS PARK 1®, the only diagnostic instrument to combine an Auto-Refractometer with a non-contact Pachymeter and a Keratometer, all in one. Sleek, slim, ergonomically designed and attractively priced, the PARK 1® uses proven, cutting-edge Scheimpflug technology. EMR ready.

Call today for more information and a FREE in-office demo!



Oculus, Inc. ▲ (888) 284-8004
www.OculusUSA.com

Circle No. 109

OCULUS PENTACAM®

Complete examination of the anterior segment is now more affordable with the OCULUS Pentacam®. In less than 2 seconds, the Pentacam® provides the topography and elevation maps for the front and back surface of the cornea and non-contact pachymetry data. Additional software modules provide Anterior Chamber Depth (ACD), chamber angles and volume information, early Keratoconus detection capability and more. EMR ready.

Call today for more information and a FREE in-office demo!



Oculus, Inc. ▲ (888) 284-8004
www.OculusUSA.com

Circle No. 110

OCULUS IMAGECAM® 2 SLIT LAMP CAMERA

This small, affordable, high-quality camera and beam splitter can adapt to most mainstream slit lamps in the marketplace. The OCULUS ImageCam® 2 is capable of capturing live videos and digital photos. Anterior and Posterior imaging capacity allows for an extremely high return on investment, maintaining high resolution photo documentation for managing many different pathologies. EMR ready.

Call today for more information and a FREE in-office demo!



Oculus, Inc. ▲ (888) 284-8004
www.OculusUSA.com

Circle No. 111

OCULUS KERATOGRAPH 5M TOPOGRAPHER

The Keratograph 5M is an advanced corneal topographer with a built-in real keratometer and a color camera optimized for external imaging. Unique features include examining the Meibomian Glands, assessing the lipid layer, automatic bulbar redness classification and non-invasive tear film break-up time measurement. EMR ready.

Call today for more information and a FREE in-office demo!



Oculus, Inc. ▲ (888) 284-8004
www.OculusUSA.com

Circle No. 112

Telephone Index

Accutome

(800) 979-2020
Circle No. 103, 104, 120

Allergan, Inc.

(800) 433-8871
Circle No. 1, 19

Angiotech

(877) 991-1110
Circle No. 43

Bausch + Lomb

(800) 828-9030
Circle No. 115

Carl Zeiss Meditec

(800) 342-9821
Circle No. 4, 83, 84, 85,
86, 87, 88, 123, 124

Eye Designs

(800) 346-8890
Circle No. 69

EyeCanHear, LLC

(941) 893-2500
Circle No. 67

Gulden Ophthalmics

(800) 659-2250
Circle No. 44, 106

Haag-Streit

(800) 787-5426
Circle No. 32, 33, 34, 35,
36, 37, 38, 39, 40

Heidelberg Engineering

(800) 931-2230
Circle No. 3

Heine USA

(800) 367-4872
Circle No. 51, 52

Hydrogel Vision

(877) 336-2482
Circle No. 82

i-Optics

(888) 660-6965
Circle No. 79, 80

Icare U.S.A.

(919) 624-9095
Circle No. 46

Keeler Instruments, Inc.

(800) 523-5620
Circle No. 2, 71, 72, 73,
74, 75, 76, 117, 118

Kowa Optimed, Inc.

(800) 966-5692
Circle No. 25, 26, 27, 28

M&S Technologies, Inc.

(877) 225-6101
Circle No. 42

Macular Risk-The Genetic Test for AMD

(866) 964-5182
Circle No. 45

Marco

(800) 874-5274
Circle No. 20, 41, 81, 105

Moria

(800) 441-1314
Circle No. 77, 78

Nicox

(855) MY-NICOX
Circle No. 116

Oculus, Inc.

(888) 284-8004
Circle No. 101, 102, 107,
108, 109, 110, 111, 112

Odyssey

(888) 905-7770
Circle No. 49

Optos

(800) 854-3039
Circle No. 17, 114

Optovue, Inc.

(866) 344-8948
Circle No. 47, 48, 50

PRN

(800) 900-2303
Circle No. 122

Reichert Technologies

(888) 849-8955
Circle No. 53, 54, 55, 56,
57, 58, 59, 60, 61, 62, 63,
64

Reliance International

(800) 735-0357
Circle No. 29, 30, 31

Sightpath Medical

(888) 975-5524
Circle No. 18

Stereo Optical

(800) 344-9500
Circle No. 11, 12, 13, 14,
15, 16, 119, 121

SuperSystems

(800) 543-7376
Circle No. 113

Synemed

(800) 777-0650
Circle No. 21, 22

TearLab

(855)-832-7522
Circle No. 24

Tomey

(888) 449-4045
Circle No. 95, 96, 97, 98,
99, 100

Topcon Medical Laser Systems

(888) 760-8657
Circle No. 65, 66

Topcon Medical Systems

(800) 223-1130
Circle No. 5, 6, 7, 8, 9, 10

Trevi Technology

(614) 754-7175
Circle No. 23

Veatch Instruments

(800) 447-7511
Circle No. 89, 90, 91, 92,
93, 94

Vision Assessment Corp.

(866) 887-9692
Circle No. 68, 70

Full Optical Lab That Fits in YOUR Dispensary

Is it time to add a new profit center to your practice?



- Become a full service dispensary
- Lower your lens costs by over 50%
- Generate greater customer satisfaction
- Affordable for even a small dispensary
- East to use, no technical skill required

Fastgrind
2200

In Office Lens Processing

It's time to take your practice to the next level

1.800.543.7376 • www.superoptical.com

Circle No. 113 info@superoptical.com

ARE YOU SEEING THE FULL PICTURE?



optomap® Ultra-widefield color image

optomap® of Ultra-widefield autofluorescence image



- Digital ultra-widefield images
- 82% of the retina
- Through 2mm pupils
- In 0.25 seconds

Tel: (800) 854-3039 email: BDS@optos.com

Building The Retina Company
Circle No. 114

optos
optos.com

PUREVISION®2 AND PUREVISION2 FOR ASTIGMATISM CONTACT LENSES

Give your patients consistently crisp, clear vision throughout the day with Bausch + Lomb PureVision2 and PureVision2 For Astigmatism contact lenses.

- Designed to help reduce halos and glare, even in low light
- Delivers outstanding comfort at insertion and throughout the day
- Breathable for high levels of oxygen transmissibility for healthy, white eyes

PureVision2 and PureVision2 For Astigmatism are indicated for daily wear only.



© 2013 Bausch & Lomb Incorporated. "P" are trademarks of Bausch & Lomb Incorporated or its affiliates. HL6115

Bausch & Lomb Inc. • (800) 828-9030
www.bausch.com

Circle No. 115

ADENOPLUS™—RAPIDLY DIAGNOSE ADENOVIRUS

AdenoPlus™ is the first CLIA-waived, in-office immunoassay that aids in the rapid differential diagnosis of acute conjunctivitis by confirming or ruling out the presence of adenovirus. Highly accurate, it identifies all serotypes of adenovirus with 90% sensitivity and 96% specificity. AdenoPlus™ takes 2 minutes or less to perform, and provides results within 10 minutes.



AdenoPlus™

Nicox, Inc. ▲ 1 (855) MY-NICOX
www.nicox.com

Circle No. 116

Keeler Slit Lamp Technology In Your Hands

PSL Classic

- Keeler Optics
- 10x & 16x Mag
- Docking Station & Direct Inline Charging

PSL 1

- Keeler Optics
- 10x Mag
- Direct Inline Charging

All of the other great features, including iPhone 4 Technology, Controllable illumination from maximum to zero lumens, charge and use the battery simultaneously (always have power); and the most apertures/filters along with 1.1mm square patch for assessing a/c flare.



Buy Online!
keelerusa.com



Keeler

Circle No. 117

Keeler Instruments, Inc. ▲ (800) 523-5620
www.keelerusa.com

...less has never meant more.

Pulsair intelliPuff® Tonometer

Less is more.

The Keeler intelligent puff system giving you a quantum leap forwards in accuracy and ease of use. intelliPuff® embodies electronic and optical technology to deliver you the speed, accuracy and ease of use you and your patients deserve.

Easiest To Use
Smallest Footprint
Lowest Price

Buy Online!
keelerusa.com



Keeler

Circle No. 118

Keeler Instruments, Inc. ▲ (800) 523-5620
www.keelerusa.com

Visit our website today!

REVIEW[®]
OF OPTOMETRY

**Introduces a New
Exclusive Service for
Eye-Care Professionals**

ECP - PRESCRIBING
RESOURCES

Complete, Easy-to-Use Point-of-Care Resources 24/7

Enhance patient care using on-the-spot premium resources with your iPad, laptop or smart phone!

- Free Electronic Prescribing Surescripts[®] Certified
- Current Drug Prices and Pharmacy Finder
- Clinical Trials Search Updated Daily
- 26,000 Resources, Including:
 - 1,850+ Eyecare Products
 - 265+ Disease States
 - 175+ Manufacturers
- Resources Delivered by Any Method You Choose
- Fully Compliant — Completely Secure



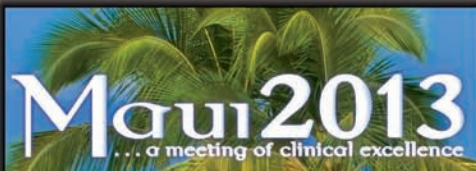
Download a QR scanner app. Launch app and hold your mobile device over the code to view our website.

Healthcare Resources Online (HRO) is a health care information technology partner of *Review of Optometry* dedicated to connecting the health care community to the best resources for patient care. HRO provides online resource centers, award-winning content, plus free ePrescribing. (877) HRO-5115 or eprescribing@healthcareresourcesonline.org

Review Meetings 2013

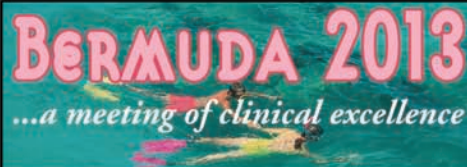
SAVE THESE DATES FOR 2013

Join us for up to 15 CE* credits!
Educational Chair: Paul Karpecki, OD



JUNE 13-16, 2013

Wailea Beach Marriott, Maui



JULY 25-28, 2013

Fairmont Hamilton Princess, Bermuda



SEPTEMBER 20-22, 2013

Marriott Del Mar, San Diego



NOVEMBER 22-24, 2013

Westin Alexandria, Virginia

More information and registration available shortly.

Please contact Lois DiDomenico with questions at ReviewMeetings@Jobson.com or 1-866-658-1772.

Check back for more information: www.revoptom.com/conferences



*Approval Pending

OPT-ALIGN™

New cutting-edge diagnostic device that leads the way with new technology by measuring the parameters of eye alignment. Opt-Align™ offers test methods for evaluating the disparity between convergence and accommodation. These exams help to determine the appropriate treatment and lens prescription by assessing fixation disparity, eye misalignment and the amount of horizontal and vertical prism required to resolve symptoms.

Features:

- Light, portable and easy to use.
- Offers a combination of both a Modified Turville Test and an Automated Cover Test to determine the amount of prism needed.
- Test report of evaluation and documentation of exam results.



STEREO OPTICAL

Stereo Optical ▲ (800) 344-9500
www.StereoOptical.com

Circle No. 119

WHEN THE PRESSURE'S ON... THE ACCUPEN® DELIVERS

Busy facilities deserve an instrument that will come through in the clutch. Accutome is proud to introduce the AccuPen Handheld Applanation Tonometer, which uses high-resolution, real-time waveform analysis to provide accurate IOP measurements. New gravity offset technology requires less calibration than other handheld tonometers. Weighing only 3.0 oz, the AccuPen is perfect to go from location to location and the new ergonomic design makes it easy-to-use.



ACCUTOME®
"Where The Difference Is Visible™"

Accutome ▲ (800) 979-2020
www.accutome.com

Circle No. 120

OPTEC® 5000 SERIES VISION TESTERS

Features Include:

- Light weight
- No training necessary
- L.E.D. lighting system lasting 100,000 hours/no light bulbs

Proven features still include:

- Test near and distance acuities of multifocal lens patients utilizing ergonomically correct positioning
- Easy for techs and saves doctors time
- Accurately test ages 2 through adult
- The only vision tester that offers customized test sequences



STEREO OPTICAL

Stereo Optical ▲ (800) 344-9500
www.stereooptical.com

Circle No. 121



Physician Recommended Nutraceuticals® • prnomegahealth.com • 800-900-2303

Recommend the Right Omega-3

- Therapeutic cellular levels of EPA/DHA
- Health coaches
- Clinical data
- Breakthrough business model



Become a PRN Partner Today
Contact Tim Small ■ 800-900-2303

Circle No. 122

tsmall@prnomegahealth.com

NEW CIRRUS HD-OCT

- Introducing new **FastTrac™** premium tracking software
- Insightful analyses and change measurement
- Premier tools for comprehensive glaucoma management



CIRRUS™ HD-OCT
Models 5000 and 500

Circle No. 123



Carl Zeiss Meditec, Inc. | Toll free: 800 342 9821 | www.meditec.zeiss.com/pg-cirrusoct We make it visible.

NEW CIRRUS photo

- Fundus imaging **and OCT** in one compact system
- Options include FAF, FA and ICG
- Interactively analyze registered fundus images and OCT cube scans with the **Multimode Navigator**



CIRRUS™ photo
Models 800 and 600

Circle No. 124



Carl Zeiss Meditec, Inc. | Toll free: 800 342 9821 | www.meditec.zeiss.com/pg-cirrusphoto We make it visible.